

# VISY-X

## VISY-Command WEB Retrofit Display



Version: 1  
Edition: 2022-09  
Art. no.: 350379



## Table of Contents

1	Overview.....	1
2	Scope of Delivery .....	2
3	Installation .....	3
3.1	VISY-Command WEB with Front Plate .....	3
3.2	Front Plate Dismantling .....	4
3.3	SECON Display Mounting .....	5

## 1 Overview

**VISY-Command WEB** is the evaluation unit available with an integrated display that shows locally the current tank data, delivery data and various alarms that are recorded by the **VISY-X system**. In addition, the VISY-Command WEB has SECON-X functionality which makes remote monitoring possible along with a SECON server.

This manual describes how to retrofit the **SECON display** to a VISY-Command WEB with front plate using the conversion kit.

The conversion kit can be ordered at FAFNIR with article number **902001**.

## 2 Scope of Delivery

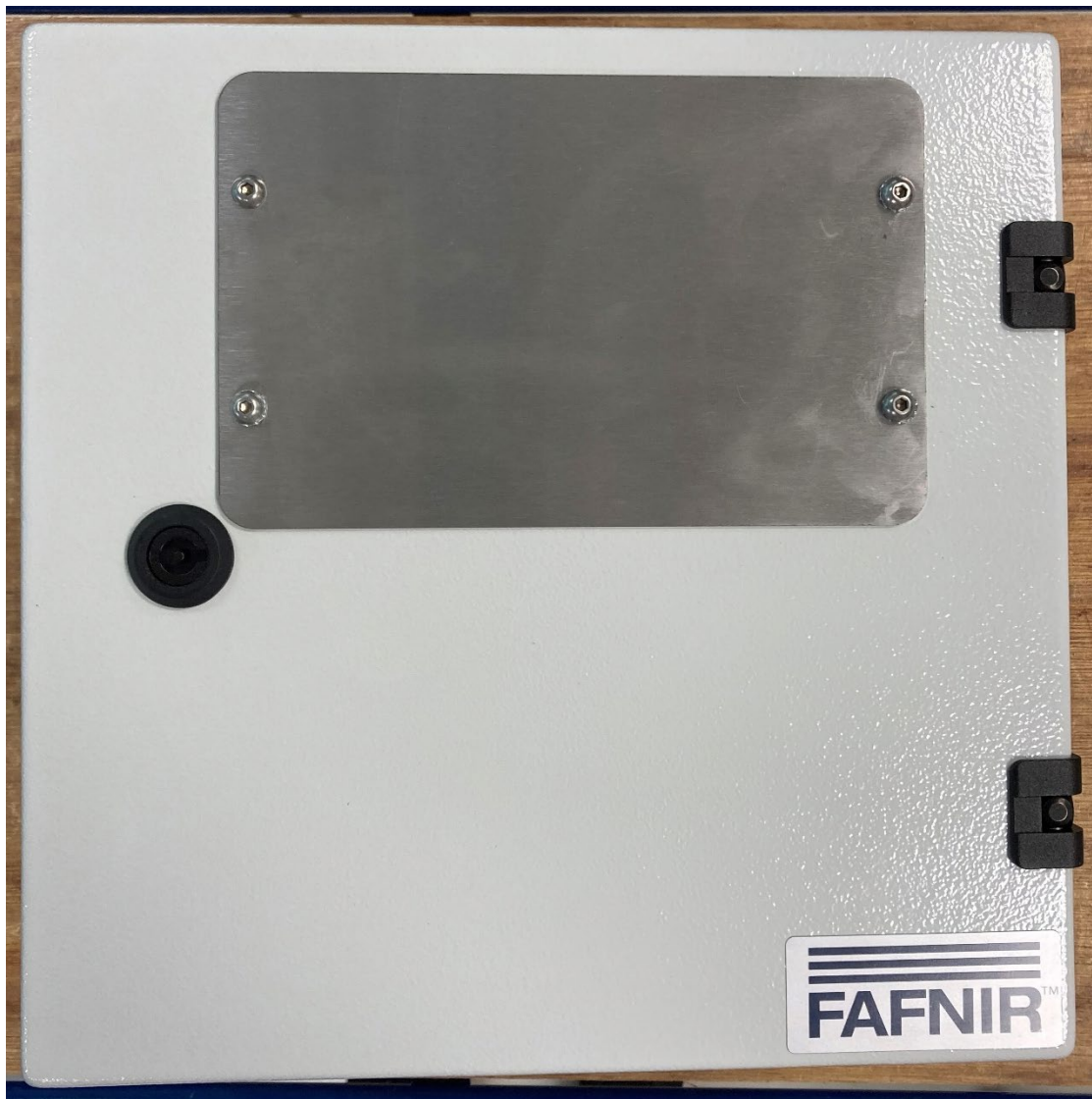
 A photograph of a rectangular display panel, likely a touch screen, mounted within a white plastic frame. The display is dark and appears to be covered with a protective film or is simply off. The frame is secured with clear adhesive tape at the corners.	<p><b>SECON Display</b></p> <ul style="list-style-type: none"><li>• Display for VISY-Command Web fixed in a plastic frame</li></ul>
	<p><b>Cable ties</b></p>

### 3 Installation



*Disconnect the VISY-Command WEB from power supply before opening the housing and protect it against reconnection, as well as determine the absence of voltage on all poles.*

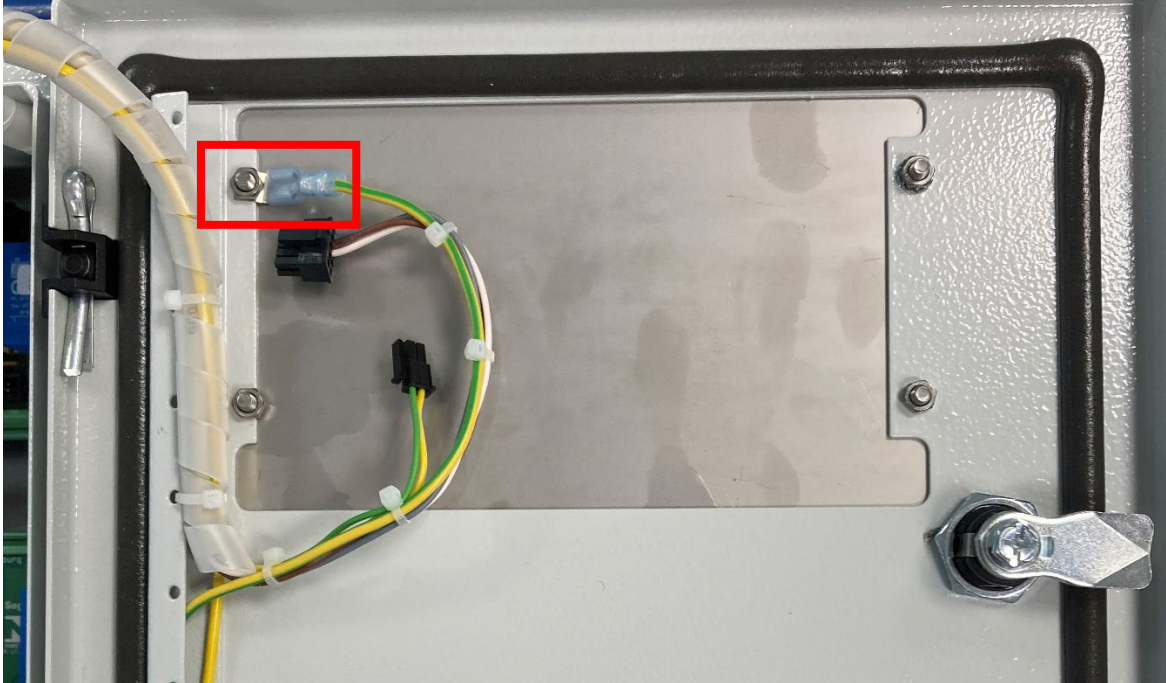
#### 3.1 VISY-Command WEB with Front Plate



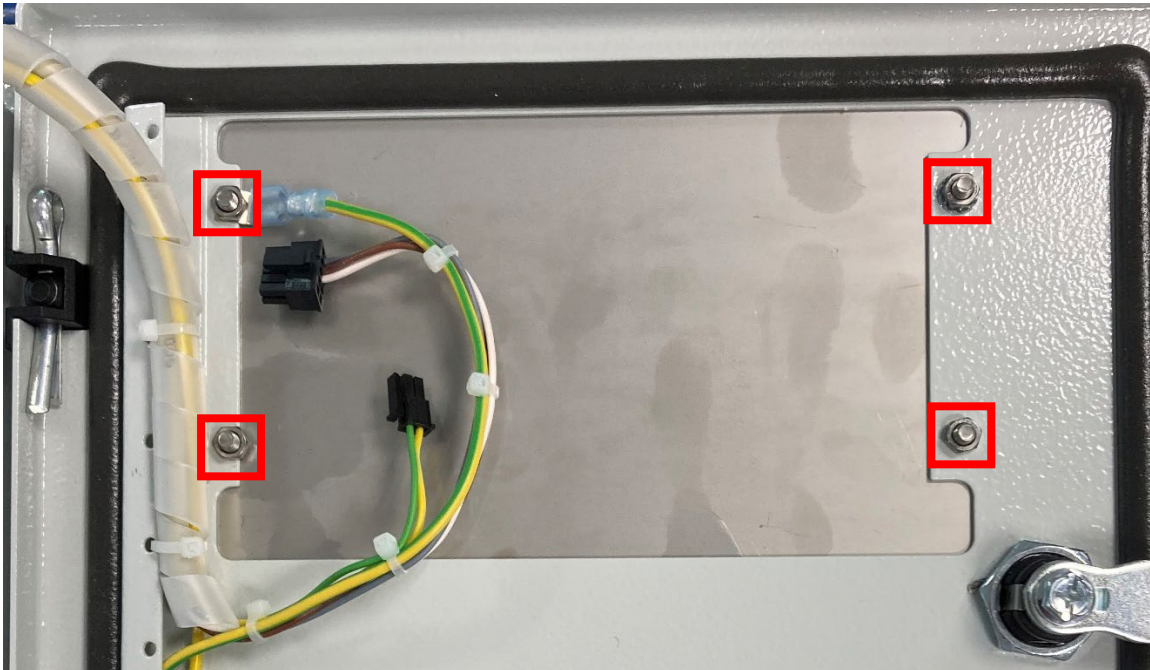
(1) Unlock the VISY-Command Web with the housing key and open the housing door.

### 3.2 Front Plate Dismantling

- (1) Unplug the earthing cable connected to the nut of the front plate's backside.

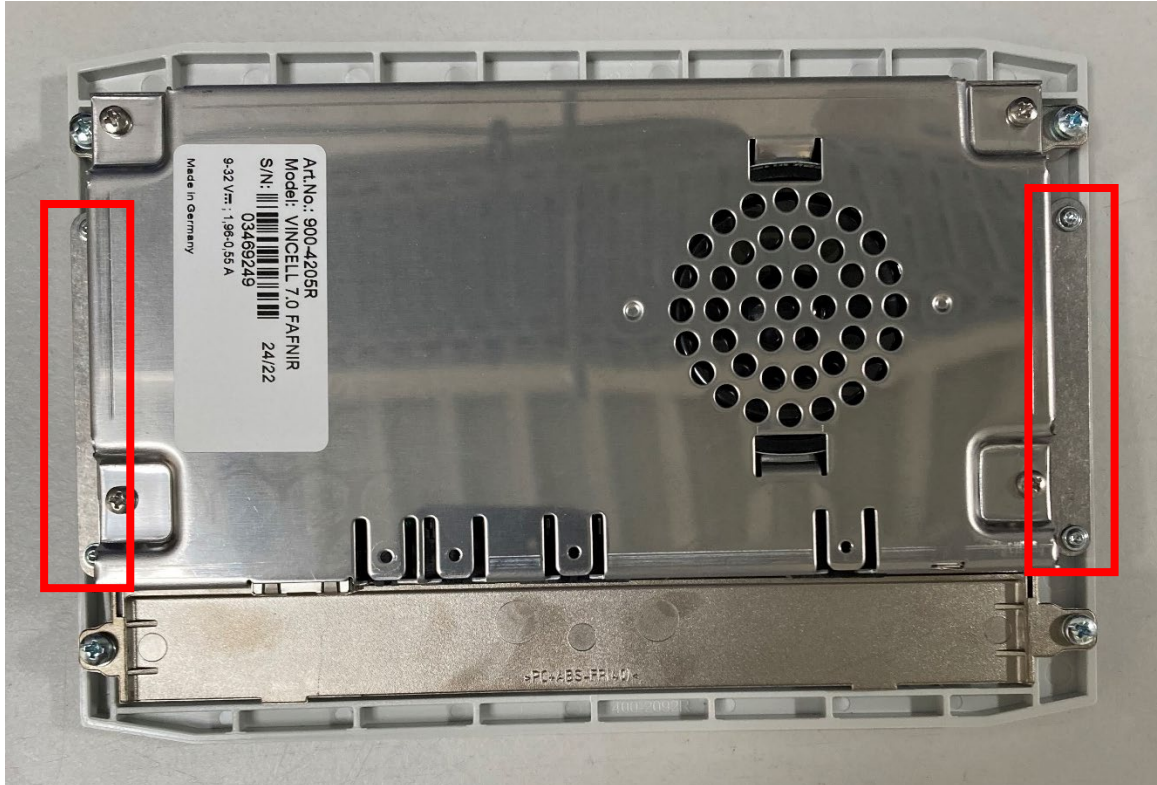


- (2) Remove the 4 nuts from the backside of the plate and remove the plate completely from the VISY-Command Web.



### 3.3 SECON Display Mounting

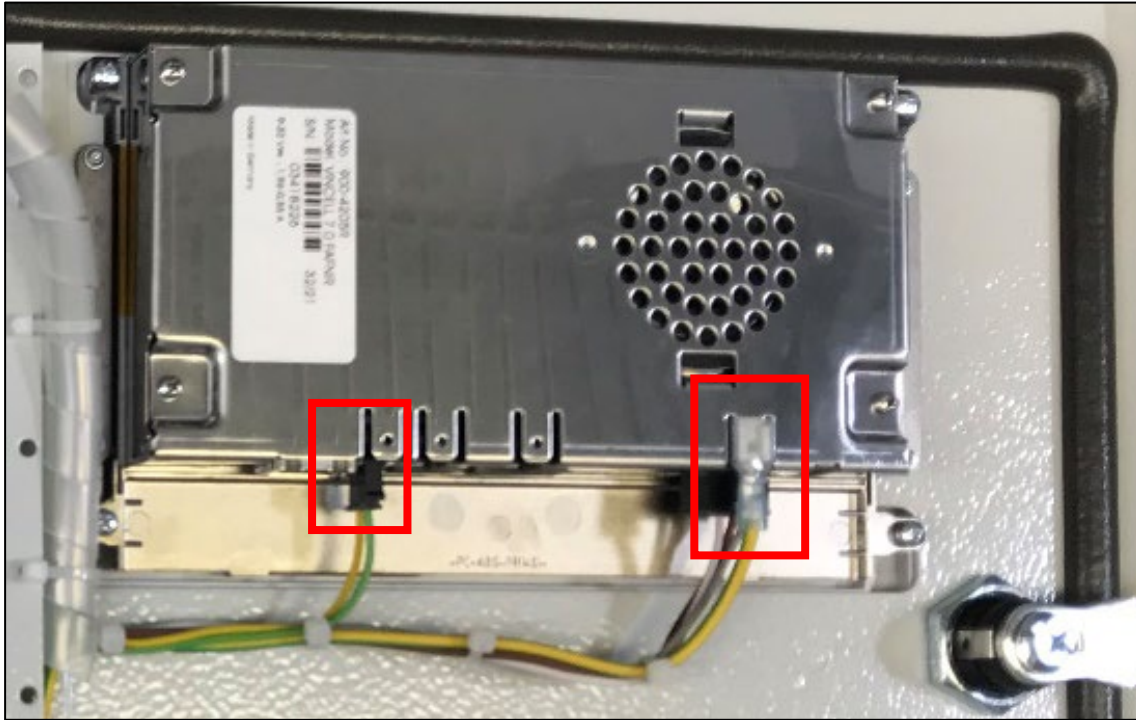
- (1) Unscrew the 2 metal plates connected to the side of the display and keep it aside.



- (2) Carefully insert the new display into the VISY-Command Web door and align it properly with the door. Now place the 2 metal rods plates on either side of the display and screw them onto the door so that the display is fixed on the door.



(3) Connect the cables to the display as shown below



(4) Final result



*All cables must be secured so that they cannot lie on or fall onto the VP board.*

(5) Close the housing door and lock it with the housing key.

(6) Mounting of the SECON display to the VISY-Command Web is now completed.



Blank Page



Blank Page

Blank Page



FAFNIR GmbH  
Schnackenburgallee 149 c  
22525 Hamburg, Germany  
T: +49/40/39 82 07-0  
E-mail: [info@fafnir.com](mailto:info@fafnir.com)  
Web: [www.fafnir.com](http://www.fafnir.com)

---